





# Breathes New Life

into Melbourne's  
Historic Equity  
Chambers Building

18







# ABOUT HILTON MELBOURNE LQS

Breathing new life into the former and heritage-listed Equity Chambers building (built in 1931), Hilton Melbourne Little Queen Street's reimagining by leading Australian architecture and design studio Bates Smart respects the building's old world-charm and restores its original features injecting new life into a treasured city landmark.

Located on the corner of Little Queen and Bourke Streets, the hotel is in the heart of Melbourne's vibrant arts, theatre and dining precincts, is on the doorstep of the city's key business districts and has easy access to public transport. The hotel is also within walking distance of Bourke Street Mall and Marvel Stadium and a short tram ride from popular tourist attractions such as the National Gallery of Victoria, the Royal Botanical Gardens and the Melbourne Cricket Ground. Melbourne international airport is 23 kilometres from the hotel.

Built in 1931, Melbourne's Equity Chambers was renowned for its architectural style and Italian Romanesque and Gothic detailing. In its reimagining as Hilton Melbourne LQS, the building's old world-charm has been respected and original features restored, whilst seamlessly connecting a modern six-level extension with a 16-level tower to the historic site. The hotel features 244 stylish guest rooms, including five

spacious suites, a restaurant and bar, a fully equipped gym, and seven meeting and event spaces. The Meeting & Event spaces are unique and highlight the buildings old world charm with modern refinement and all feature natural light.

Guests of Hilton Melbourne Little Queen Street will experience the timeless pleasures of the Melbourne's grandeur, and an opportunity to discover new styles and tastes through its unique LQS signature experiences in which Melbourne's past and present converge.







Photo credit: Sean Fennessy

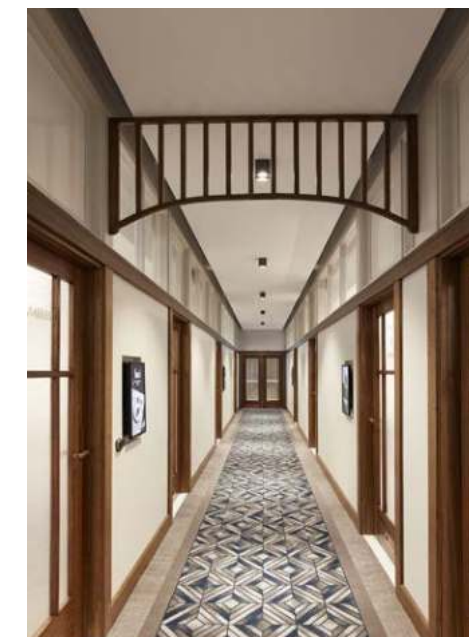


## BESPOKE MEETINGS & EVENTS

There are seven meeting and event spaces that range in size from 24 to 143 square meters. The spaces are imbued with Art Deco aesthetics and natural light, and are equipped with high-speed Wi-Fi and the latest audio-visual technology. A large open-air rooftop balcony on level five offers city skyline views and a large wall mural by Kitt Bennett and Juddy Roller.

Meetings and events are all backed by Hilton EventReady with CleanStay, which provides curated solutions for every step of an event planning process to create event experiences that are clean, flexible, safe and socially responsible. And to address the dramatic shift in how people meet and celebrate, the hotel is offering Hilton EventReady Hybrid Solutions for event planners.

To realize Guests' desired experience, the seasoned event and banqueting team is at the ready to execute their requests such as setting up state-of-the-art digital devices and organizing a stellar dinner.







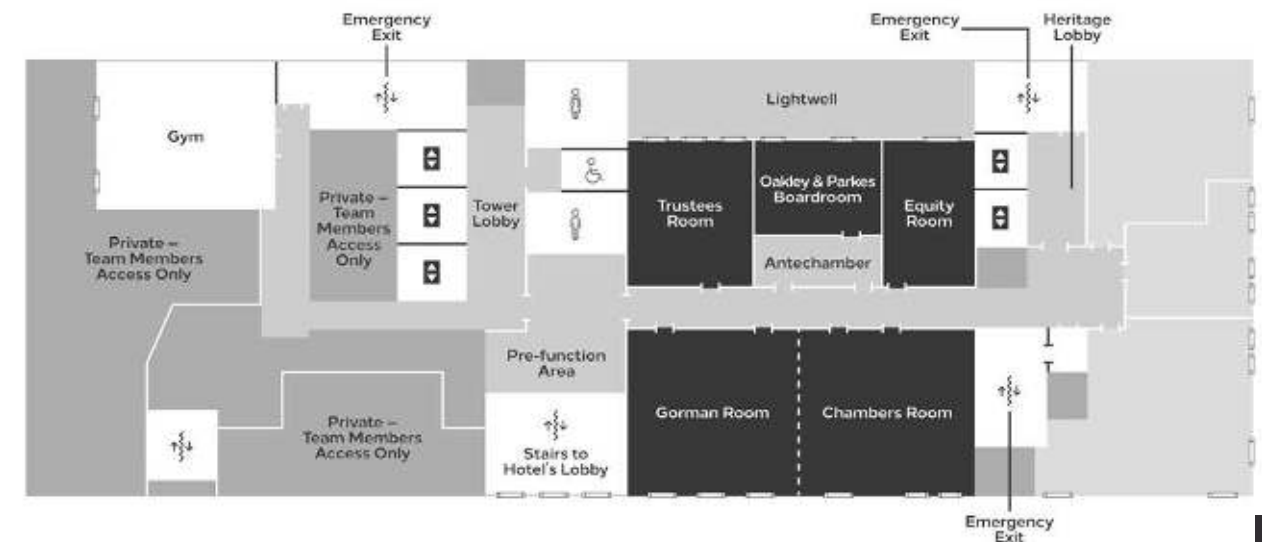
### Meeting with Style

Meetings at Hilton Melbourne Little Queen Street are sophisticated and delicious affairs, a combination of modern technology, impeccable service and history-inspired glammers everywhere you look.



### Level 1 FLOOR MAP KEY

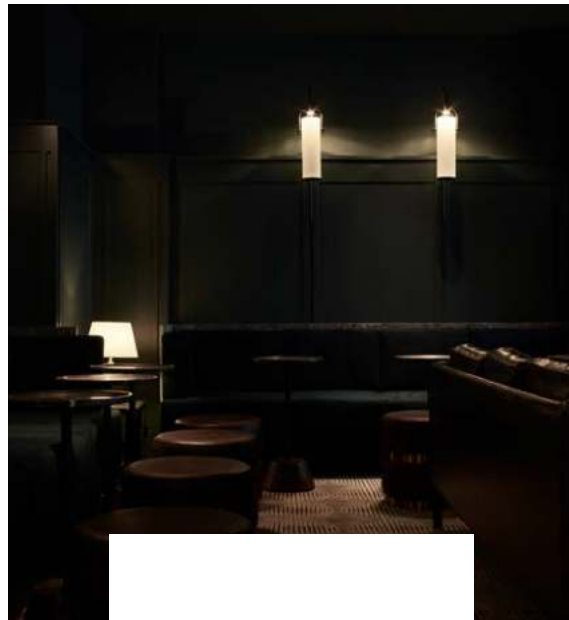
- Meeting/Conference Rooms
- Amenities
- Public Space
- Private
- Guest Rooms
- Windows



### Meetings and Events Capacity Chart

Name	Dimension (m) (L x W x H)	Area (m <sup>2</sup> )	Boardroom	Theatre	Classroom	U-Shape	Cabaret	Banquet	Cocktail
<b>OAKLEY &amp; PARKES BOARDROOM</b>	5.6 x 4.1 x 2.7	24	10	Fixed Boardroom Table					
<b>EQUITY</b>	4.0 x 6.5 x 2.7	25	18	20	14	15	12	18	25
<b>TRUSTEES</b>	5.8 x 6.5 x 2.7	40	18	35	18	17	12	18	40
<b>GORMAN + CHAMBERS</b>	15.7 x 7.3 x 2.7	143	52	100	60	33	49	63	100
GORMAN	7.8 x 7.3 x 2.7	70	24	50	27	22	21	27	60
CHAMBERS	7.9 x 7.3 x 2.7	73	24	50	27	22	21	27	60
<b>LUCI RESTAURANT</b>	15.2 x 16.0 x 6.0	243	-	-	-	-	-	-	200
LUCI LUNGO TABLE	13.0 x 3.5 x 6.0	46	32	-	-	-	-	-	70
<b>THE DOUGLAS CLUB</b>	4.7 x 5.1 x 2.9	24	-	-	-	-	-	-	30
THE DOUGLAS CLUB LOUNGE	7.8 x 7.4 x 2.9	58	-	-	-	-	-	-	40





## PRIVATE EVENTS

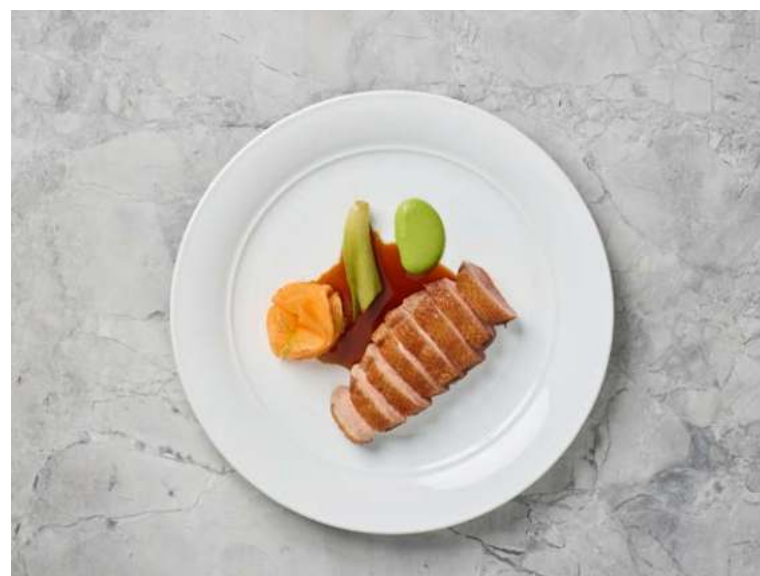


Photo credit: Kristoffer Paulsen

Hilton Melbourne Little Queen Street is an ideal spot to hold unforgettable private events. With one of the best culinary and mixologist teams in town, there is no shortage of exquisite delicacies. The bespoke-designed menu covers various serving options, but one thing is certain - it will leave an impression.

### **Luci**

Luci is a contemporary Australian restaurant set in the grand hall of Melbourne's historic Equity Chambers building. Its art deco styled dining room - designed by Bates Smart - provides

a sophisticated backdrop to awarded contemporary Australian menu with Italian accents.

### **The Douglas Club**

Set within the historic Equity Chambers Building, The Douglas Club is an opulent lounge bar split across two rooms. The bar celebrates a bygone era where glasses are linked between the historic walls of this polished yet laid back establishment. The walls are swathed in a blue-green hue that compliments the bar's striking marble features, countered by emerald green velvet lounges and rose gold accents.







# SEATED BREAKFAST

\$50 PP

SAMPLE MENU

SELECTION OF SEASONAL FRUIT  
SELECTION OF FRESHLY BAKED PASTRIES

Alternate serve (please choose 2 options)

AVOCADO ON TOAST  
Yarra Valley feta, tomato, poached eggs

OMELETTE ON TOAST  
Choice of three: mushrooms, onions, capsicum, tomatoes, ham, smoked salmon, spinach, cheddar cheese

TOASTED GRANOLA  
berry parfait & fresh berries

MUSHROOM & QUINOA BREAKFAST BOWL  
avocado, Yara valley feta, baby tomato, poached egg and crispy onion

WAFFLES  
chocolate ganache, maple syrup, fresh berries

EGGS BENEDICT  
poached egg & hollandaise on buttermilk crumpet choice of bacon or smoked salmon

BEVERAGES

Accompanied by orange juice, Duke’s coffee and tea

Menu is a sample and subject to seasonal changes.  
Dietary requirements can be catered for and these should be advised upon booking.





# DAILY DELEGATE

## FULL DAY \$119 PP

includes coffee & tea on arrival, morning tea, executive luncheon, afternoon tea

## HALF DAY \$99 PP

includes coffee & tea on arrival, morning OR afternoon tea, executive luncheon

### SAMPLE MENU

#### MORNING TEA

Duke's Filter Coffee + Dilmah Tea

Choose 2 options

Ham and cheese croissant

Feta and olive frittata with semi dried tomato

Bacon and cheese croque monsieur toasties

Smoked salmon, lemon pepper mustard and cheese toasties Mini

strawberry croissant with vanilla cream

Mini yogurt fruit pots

Mini granola pots with lemon curd (GF)

#### AFTERNOON TEA

Duke's Filter Coffee + Dilmah Tea

Choose 2 options

Chorizo empanada with jalapeno salsa

Chicken and tarragon filo parcels

Ricotta and spinach filo triangles

Bacon mozzarella donut

Peanut butter brownie (GF & Vegan)

Pastal de nata (Portuguese custard tart)

Salted caramel millionaires shortbread (GF & Vegan)

Menu is a sample and subject to seasonal changes.

Dietary requirements can be catered for and these should be advised upon booking.

### PLATED LUNCH (SERVED IN LUCI)

Accompanied by juices and soft drinks

#### ENTRÉE

Jerusalem artichoke, almond sauce, black garlic, broad beans

Cured kingfish, watermelon, puttanesca, tomato

Spinach cavatelli, zucchini & chorizo, walnut

#### MAINS

Harissa cauliflower, caramelised eggplant puree, shimeji mushroom

Market fish with grilled asparagus, bagna cauda, paprika oil

Dry aged duck breast, smoked peach, beetroot, mountain pepper jus

#### SERVED WITH

Rosemary salt fried potato

Mixed leaf salad

#### DESSERTS

Lemon myrtle panna cota, wattle seed crumb, rhubarb

Tiramisu, mascarpone, coffee

Menu is a sample and subject to seasonal changes.

Dietary requirements can be catered for and these should be advised upon booking.

Luncheon a la carte style is available for groups of up to 20 guests.

Alternate drop is available for groups of 21 guests or more.

### DAY DELEGATE PACKAGES INCLUDE:

Note pads & pens

Complimentary 55-inch Smart TV with HDMI

Complimentary Wi-Fi

Unlimited coffee & tea

Flip charts, whiteboards, markers, microphones, projectors and other AV available at additional cost





# MEET WITH PURPOSE

FULL DAY \$99 PP

includes coffee & tea on arrival, morning tea, working luncheon, afternoon tea

HALF DAY \$79 PP

includes coffee & tea on arrival, morning OR afternoon tea, working luncheon

SAMPLE MENUS

MORNING TEA

Duke’s Filter Coffee + Dilmah Tea

Choose 2 options

Ham and cheese croissant

Feta and olive frittata with semi dried tomato

Bacon and cheese croque monsieur toasties

Smoked salmon, lemon pepper mustard and cheese toasties

Mini strawberry croissant with vanilla cream

Mini yogurt fruit pots

Mini granola pots with lemon curd (GF)

AFTERNOON TEA

Duke’s Filter Coffee + Dilmah Tea

Choose 2 options

Chorizo empanada with jalapeno salsa

Chicken and tarragon filo parcels

Ricotta and spinach filo triangles

Bacon mozzarella donut

Peanut butter brownie (GF & Vegan)

Pastal de nata (Portuguese custard tart)

Salted caramel millionaires shortbread (GF & Vegan)

DAY DELEGATE PACKAGES INCLUDE

Note pads & pens

Complimentary 55-inch Smart TV with HDMI

Complimentary Wi-Fi

Filtered water

Unlimited coffee & tea

WORKING LUNCHEON

Set Lunch Buffet

Monday | Friday

House selection of 3 dips served with vegetable crudité’s  
Italian piadina flatbread filled with parma ham, basil pesto and rocket  
Roasted peperonata, plant-based fetta and salad wrap (Vegan)  
Quinoa salad with baby spinach, charred broccolini, cucumber, balsamic dressing (Vegan)  
Classic caprese salad with mozzarella, vine tomato and basil  
Red velvet Cake  
Sliced fresh fruits

Tuesday | Saturday

House selection of 3 dips served with vegetable crudité’s  
BBQ Tuna melt with swiss cheese and sweet corn  
Falafel pitta pocket with spiced coconut yogurt and coriander (Vegan)  
Glass noodle salad with sweet chilli, basil, pickle cucumber and carrot (Vegan)  
Pearl barley salad with sundried tomato, toasted seeds and crumbled plant-based fetta (Vegan)  
Banana, coconut and macadamia cake (Vegan)  
Sliced fresh fruits

Menu is a sample and subject to seasonal changes.  
Dietary requirements can be catered for and these should be advised upon booking.



WORKING LUNCHEON

Set Lunch Buffet

Wednesday | Sunday

House selection of 3 dips served with vegetable crudité’s  
Smashed avocado and egg sandwich with salad leaves and toasted seeds  
Char grilled chicken pide, chipotle mayo, spiced tomato salsa  
Quinoa salad with baby spinach, charred broccolini, cucumber, balsamic dressing (Vegan)  
Curried cous cous salad with pomegranate molasses, roasted cauliflower, coconut cumin yogurt dressing (Vegan)  
Roasted Pumpkin with arugula, walnuts and olive oil  
Salted Caramel Profiteroles  
Sliced fresh fruits

Thursday

House selection of 3 dips served with vegetable crudité’s  
Open poached salmon on rye with caper aioli  
Chickpea wrap with piquillo peppers and rocket  
Aussie style potato salad, mustard mayo, smashed egg and crispy bacon  
Roasted beetroot salad, spiced yogurt, sunflower seeds and mint  
Chocolate and Coffee Opera  
Sliced fresh fruits

Additional hot lunch add-ons are available upon request





# OUR HOTEL

Hilton Melbourne Little Queen Street's heritage building was formerly the Melbourne Equity Chambers, built in 1931, which was renowned for its architectural style and Italian Romanesque and Gothic detailing. In its reimagining, architecture and design studio Bates Smart has respected the building's old world-charm by restoring original features, then injected new life into the site adding a modern six-level extension, and a new 16-level tower.

Our guest rooms feature custom details that celebrate the building's design heritage as well as Melbourne cityscapes – leather wardrobe handles are inspired by vintage luggage, carpet designs mirror patterns found in the Equity Chambers facade, and prints by Roger Arnall showcase Melbourne architecture.

Modern in-room amenities include HDTV with built-in Chromecast, specialty coffee curated by Dukes Coffee Roasters and premium hotel bath products by local maker Hunter Lab.

The hotel's King Junior Suite, King Premium Suite and King Master Suite are located from level one to four of the former Equity Chambers building with access through the heritage Bourke Street lobby and restored 1930s elevator, while the King Premier Corner Rooms are in the new tower and provide city skyline views.

There is also a fully equipped 24-hour hotel gym on site.

Room types include:

- King/Twin Guest Room
- King Superior Room
- King Deluxe Room
- King Premier Room
- King Premier Corner Room
- King Junior Suite
- King Premium Suite
- King Master Suite



Photo credit: Sean Fennessy









# OUR LOCATION

This sophisticated hotel is strategically located off Bourke Street in the heart of the city, the local trams stop adjacent to the hotel.

Melbourne's most iconic attractions are just a stone's throw away. A trip to the nearby Bourke Street Shopping Mall, Queen Victoria Markets, the National Gallery of Victoria, Princess Theatre would give Guests a glimpse of the Melbourne lifestyle.

## Nearby Shopping Facilities

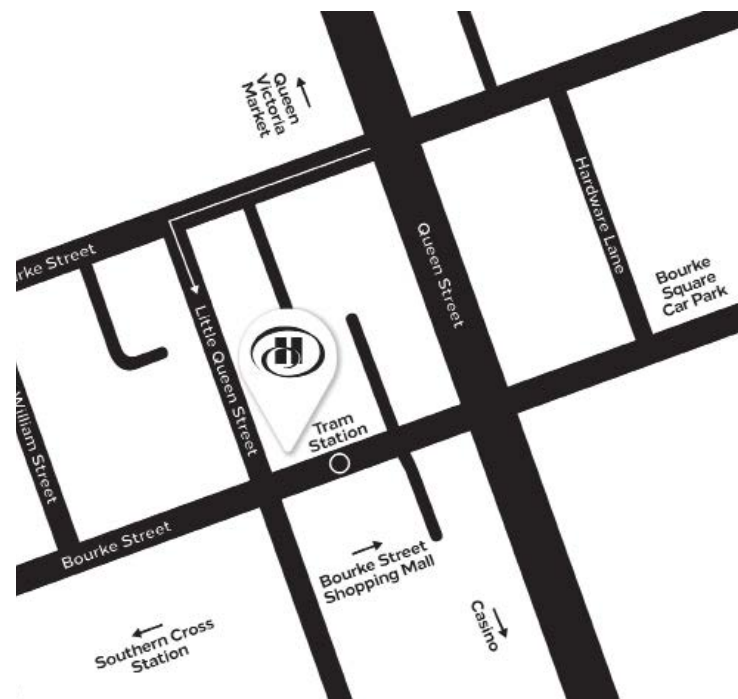
- Bourke Street Mall (500m)
- The Block Arcade (600m)
- Emporium Melbourne (600m)
- Queen Victoria Market (950m)

## Local Attractions

- Hardware Lane (Dining) (240m)
- Docklands & Marvel Stadium (1.1km)
- Federation Square (1.2km)
- National Gallery of Victoria (NGV) (1.7km)
- Melbourne Cricket Ground (MCG) (2.9km)
- Melbourne Convention and Exhibition Centre (2km)

## Transportation Proximity

- Tram Stop (50m | in the centre of the free tram zone)
- Southern Cross Station (800m)
- Melbourne Airport (20km)



# PREFERRED PARTNER



Leading Event production  
of audio visual and event  
staging solutions





---

**HILTONMELBOURNELQS.COM**  
**18 LITTLE QUEEN STREET, MELBOURNE**

**MELAM-SALESADM@HILTON.COM**  
**+61 3 9116 8888**

  **@HiltonMelbourneLQS**